

DO NOT OPEN THE SEAL OF THE BOOKLET UNTIL YOU ARE ASKED TO DO SO

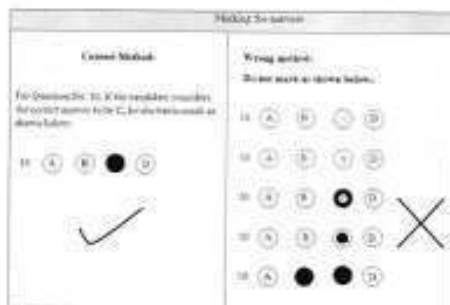
Time Allowed: 2 Hours

Maximum Marks: 100

Read the following instruction carefully before you begin to answer the question. This booklet contains questions in English Only.

INSTRCTIONS TO CANDIDATE

1. Every candidate is required to satisfy that the Question Paper Booklet given to him / her contains the number of pages as printed on the cover page of the booklet. In case of any discrepancy, he/she should ask for replacement of the Question Paper Booklet immediately.
2. The Question Paper Booklet will consist of 100 Multiple Choice Questions (MCQ's). Each question will be of one mark and for every question, four answer options designated as A, B, C and D are given in the Question Paper Booklet. The candidate is required to select one amongst the options corresponding to the question as his/her right answer and darken the circle i.e. A or B or C or D as the case may be, to be the answer in the OMR Answer Sheet with black ball point pen only.
Example:



3. Candidates are required to sign in the OMR Answer Sheets and Attendance Sheet in the same manner as they have signed in their application form and Admit Card. They must affix their Left Hand Thumb Impression in the attendance sheet.
4. The OMR Answer Sheet contains the serial number of questions as given in the Question Paper Booklet. Against each question number, there are four circles marked as A, B, C, and D which correspond to the four answer options of which one is to be darkened on the OMR Answer Sheet only. No marking should be done on the Question Paper Booklet.
5. Candidates are required to correctly fill in the Question Paper Booklet Code (as mentioned on the top of the Question Paper Booklet) in the OMR Answer Sheet, as the same will be considered final for result computation. Candidates not filling the Question Paper Booklet Code will not be awarded any marks.
6. The candidate must write his Roll Number, as allotted to him/her and printed in the Admit Card, on OMR Answer Sheet in boxes and darken appropriate circles with Blue/Black Ball Point Pen. Similarly, write Question Paper Booklet Number as also the codes viz A or B or C or D, as the case may be, subject code and Exam Centre code on OMR Answer Sheet. The candidate should not make noting/scribbling on the Answer Sheet and Question Paper Booklet except in the space provided for rough work. In case any candidate fills in the information wrongly, the Institute will not take any responsibility of rectifying the mistake. The Question Paper Booklet Code as darkened by the candidate will be final and the result will be processed on the basis of the circle darkened by him/her.
7. Candidates should not open the seal of the Question Paper Booklet before the time specified for the commencement of the examination.

8. Multiple darkened circles for a question will be treated as wrong answer. For question/s not answered i.e. blanks, no marks will be given or deducted.
9. Candidate should not change /erase / overwrite on the options while answering the questions in the event of any such act zero marks shall be given for the said question. Use of white/correction fluid, eraser, blade, etc. is not allowed on the OMR Answer Sheet.
10. The candidate will be required to submit the OMR Answer Sheet at the conclusion of each session of examination against acknowledgement by the Invigilator on the admit card.
11. Candidates may bring a card board or clip board on which nothing has been written so as to avoid any difficulty in darkening the circles in OMR Answer Sheet as the tables/furniture provided in the examination hall may or may not have even or smooth surface.

*****All the best*****

Question Paper III

English Language

Read the following passage and choose the correct answers for the two questions given below:

Paper is named after papyrus, a reedlike plant used by ancient Egyptians as writing material more than 5,000 years ago. The Chinese invented the paper that we use 2,000 years ago.

A piece of paper is mainly made up of tiny fibers. The fibers used in making paper are plant fibers and there are millions of them in one sheet. In addition to the plant fibers, dyes and additives such as resin may also be used. Dyes can give different colours to paper; resin can add weight and texture.

Where do these fibers come from? The majority of paper is made from the plant fiber that comes from trees. Millions of trees are cut down, but new ones are planted in their place. Paper may also be made from things like old rags or pieces of cloth. Wastepaper – paper that has been made and used can be turned into recycled paper. This recycling process saves forests and energy and reduces air and water pollution.

1. According to the passage, the paper that we use was first invented by

- A. the Chinese
- B. the Egyptians
- C. ancient cultures
- D. foresters

2. It can be inferred from the passage that recycling paper is

- A. detrimental to the environment
- B. wasteful
- C. good for the environment
- D. economical

3. Choose the appropriate synonym from the following words :

Filth

- A. dirt
- B. colourful
- C. fulfil
- D. fifth

4. Choose the appropriate antonym from the following words:

Demolish

- A. raze
- B. generate
- C. elevate
- D. impair

5. Fill in the blanks with appropriate articles given below:

_____ university is _____ institution for higher education.

- A. A, an
- B. The, a
- C. A, the
- D. The, an

6. Fill in the blanks with an appropriate preposition:
Mr. Sharma concluded his speech _____ stressing on Buddha's teaching on the importance of charity.
- A. with
 - B. by
 - C. at
 - D. in
7. Select the correct options in the following sentence:
If we drive a little _____, we'll see a great place to stop for _____.
- A. further, dessert
 - B. farther, dessert
 - C. further, desert
 - D. farther, desert
8. Select the correct mis-spelt words:
- A. warrant
 - B. warant
 - C. warand
 - D. waraand
9. Change into reported speech:
The boy said, "I'm happy with the results".
- A. The boy said that the results were happy.
 - B. The boy said that he was happy with the results.
 - C. The boy said that the happiness comes with the results.
 - D. The boy said that I am happy with my results.
10. Change into direct speech:
The policeman enquired where we were going.
- A. The policeman enquired "where we were going?"
 - B. The policeman asked us, "Where are you going?"
 - C. The policeman said, "Where?" we were going.
 - D. The policeman enquired where are we going.
11. Make it Passive:
We are going to watch a movie tonight.
- A. We are watching a movie.
 - B. To watch a movie we are going.
 - C. A movie we are going to watch.
 - D. A movie is going to be watched by us.
12. Make it Active:
The novel was read by mom in one day.
- A. In one day the novel was read by mom.
 - B. Mom was read the novel in one day.
 - C. Mom read the novel in one day.
 - D. In one day by mom this novel was read.

13. Rewrite the sentence correctly:

But he insisted changing the story.

- A. But he insisted on the story changing.
- B. But he insisted to change the story.
- C. But he insisted that he had changed the story.
- D. But he insisted to changing the story.

14. Choose any one which can be substituted for the given phrase:

Something that can be heard

- A. Auditory
- B. Audio-visual
- C. Audible
- D. Audition

15. Match the idiom with the definition:

To rain cats and dogs

- A. to bathe the cats & dogs
- B. to fight like animals
- C. to rain heavily
- D. to rain when the sun shines

16. Read the sentence and choose the phrase that completes the quotation:

"Work hard and _____ it for success."

- A. steep in
- B. step on one's toes in
- C. stick to
- D. pull out of

17. Shuffle the parts labelled PQRS to produce the proper sequence:

There was

- P – needed for its everyday life
- Q – a time when each family
- R – for itself most of the thing it
- S – actually produced

- A. QRSP
- B. RQPS
- C. RSPQ
- D. QSRP

18. Insert the exact verb meaning 'to cut'.

You _____ a lawn.

- A. shear
- B. prune
- C. reap
- D. mow

19. Fill in the blank with the correct option:
The man reached his destination _____ his feet were swollen.
- A. since
 - B. inspite of
 - C. although
 - D. besides
20. Fill in each blank with an educated guess in this short cloze reading:
One of the longest wars in history was the 100 years' War. It was _____ between England & France in the 14th & 15th _____.
- A. series of wars , century
 - B. series , year
 - C. war , day of year
 - D. conflict , december 1457

General Awareness

21. Which state government has launched a "Business First Portal"?
- A. Haryana
 - B. Uttar Pradesh
 - C. Punjab
 - D. Rajasthan
22. Which among the following is India's first ministry to have an account on twitter?
- A. Ministry of Commerce and Industry
 - B. Ministry of External Affairs
 - C. Ministry of Finance
 - D. Home ministry
23. Which among the following Viceroy's tenure, Simon Commission was appointed?
- A. Lord Wellington
 - B. Lord Irwin
 - C. Lord Reading
 - D. Lord Chelmsford
24. In which of the following city Elephant festival is celebrated annually?
- A. Jaipur
 - B. Kota
 - C. Jodhpur
 - D. Ajmer
25. How Kumbh mela is organised in India?
- A. Every 4 years at 3 locations
 - B. Every 12 years at 4 locations
 - C. Every 3 years at 4 locations
 - D. Every 4 years at 4 locations

26. Which country is compiling World's first Traditional Knowledge Digital Library?
- A. China
 - B. India
 - C. USA
 - D. UK
27. Which of the following schemes have been subsumed in the recently approved Ayushman Bharat National Health Protection Mission (AB-NHPM)?
- A. Rashtriya Swasthya Bima Yojana (RSBY)
 - B. Senior Citizen Health Insurance Scheme (SCHIS)
 - C. National Life Insurance Scheme
 - D. a and b
28. The land frontier of India is about 15200 KM. Which of the following countries shares the largest border length with India:
- A. Bangladesh
 - B. Pakistan
 - C. China
 - D. Nepal
29. The famous hill-station 'Kodaikanal' lies in :
- A. Nilgiri hills
 - B. Palani hills
 - C. Cardamom hills
 - D. Javadi hills
30. Which among the following is/are the after-effect(s) of deforestation?
- 1) Increased run-off leading to soil erosion
 - 2) Recharging of ground-water table
 - 3) Flash floods
- A. Only 1
 - B. 1 and 2
 - C. 1 and 3
 - D. 1, 2 and 3
31. International Yoga day is celebrated on
- A. May 22
 - B. June 21
 - C. May 15
 - D. July 23
32. The 2018 FIFA world come is scheduled to take place in which country.
- A. USA
 - B. Spain
 - C. Russia
 - D. Brazil

33. Which Indian cricket player received this year's Rajiv Gandhi Khel Ratna award?
- A. Ajinkya Rahane
 - B. Virat Kohli
 - C. Suresh Raina
 - D. M.S Dhoni
34. Who among following received Dada Saheb Phalke Award for the year 2018?
- A. Rishi Kapoor
 - B. Shashhi Kapoor
 - C. Vinod Mehera
 - D. Vinod Khanna
35. Which Union minister presented the Union Budget 2018 in Lok Sabha?
- A. Nitin Gadkari
 - B. Rajnath Singh
 - C. Arun Jaitley
 - D. Suresh Prabhu
36. Which is a rocket launch centre of ISRO?
- A. Sriharikota
 - B. Mysore
 - C. Hyderabad
 - D. Pune
37. Google is founded by
- A. Steve Jobs
 - B. Sergey Brin
 - C. Bill Gates
 - D. Sabir Bhatiya
38. The famous "Gitanjali" is related to
- A. Satyendra Bose
 - B. Jagdishchandra Bose
 - C. Rabindranath Tagore
 - D. Prem Chand
39. India has the world's largest share of which of the following
- A. Manganese
 - B. Mica
 - C. Copper
 - D. Diamond
40. First Tejas Express of Indian Railway is launched on which route
- A. Mumbai- Delhi
 - B. Delhi- Agra
 - C. Mumbai - Goa
 - D. Delhi- Kolkata

Numerical Aptitude

41. The sum of first five prime numbers is:
- A. 11
 - B. 18
 - C. 26
 - D. 28
42. If $0.75 : x :: 5 : 8$, then x is equal to:
- A. 1.12
 - B. 1.2
 - C. 1.25
 - D. 1.30
43. Three candidates contested an election and received 1136, 7636 and 11628 votes respectively. What percentage of the total votes did the winning candidate get?
- A. 57%
 - B. 60%
 - C. 65%
 - D. 90%
44. A grocer has a sales of Rs.6435, Rs. 6927, Rs.6855, Rs.7230 and Rs.6562 for 5 consecutive months. How much sale must he have in the sixth month so that he gets an average sale of Rs.6500?
- A. Rs.4991
 - B. Rs.5991
 - C. Rs.6001
 - D. Rs.6991
45. The square root of $(7 + 3\sqrt{5})(7 - 3\sqrt{5})$ is
- A. $\sqrt{5}$
 - B. 2
 - C. 4
 - D. $3\sqrt{5}$
46. A sum fetched a total simple interest of 4016.25 at the rate of 9 % p.a. in 5 years. What is the sum?
- A. 4462.50
 - B. 8032.50
 - C. 8925
 - D. None of these
47. A person crosses a 600 m long street in 5 minutes. What is his speed in km per hour?
- A. 3.6
 - B. 7.2
 - C. 8.4
 - D. 10

48. A person incurs a loss of 5% by selling a watch for Rs. 1140. At what price should the watch be sold to earn 5% profit.
- A. Rs. 1200
 - B. Rs. 1260
 - C. Rs. 1230
 - D. Rs. 1290
49. Raj got a new chair for 35% discount. Had Raj got no discount, Raj would have had to pay Rs. 224 more. How much did Raj pay for the chair?
- A. Rs. 416
 - B. Rs. 640
 - C. Rs. 208
 - D. Rs. 224
50. A can do a work in 15 days and B in 20 days. If they work on it together for 4 days, then the fraction of the work that is left is :
- A. $\frac{1}{4}$
 - B. $\frac{1}{10}$
 - C. $\frac{7}{15}$
 - D. $\frac{8}{15}$
51. A hall is 15 m long and 12 m broad. If the sum of the areas of the floor and the ceiling is equal to the sum of the areas of four walls, the volume of the hall is:
- A. 720
 - B. 900
 - C. 1200
 - D. 1800
52. How many bricks, each measuring 25 cm x 11.25 cm x 6 cm, will be needed to build a wall of 8 m x 6 m x 22.5 cm?
- A. 5600
 - B. 6000
 - C. 6400
 - D. 7200
53. If the radius of the circle is diminished by 10%, then its area is diminished by
- A. 10 %
 - B. 19 %
 - C. 20 %
 - D. 36 %
54. The value of $\cos 225^\circ + \cos 270^\circ$ is
- A. $-\sqrt{2}$
 - B. 2
 - C. $-\frac{1}{\sqrt{2}}$
 - D. 1

55. If the sides of a triangle are 26 cm, 24 cm and 10 cm, what is its area?

- A. 120 cm^2
- B. 130 cm^2
- C. 312 cm^2
- D. 315 cm^2

56. A cube of side one meter length is cut into small cubes of side 10 cm each. How many such small cubes can be obtained?

- A. 10
- B. 100
- C. 1000
- D. 10000

57. The radius of a wheel is 22.4 cm. What is the distance covered by the wheel in making 500 revolutions.

- A. 252 m
- B. 704 m
- C. 352 m
- D. 808 m

Study the following table chart and answer the questions

Classification of 100 Students Based on the Marks Obtained by them in Physics and Chemistry in an Examination.

Subject	Marks out of 50				
	40 and above	30 and above	20 and above	10 and above	0 and above
Physics	9	32	80	92	100
Chemistry	4	21	66	81	100
Average (Aggregate)	7	27	73	87	100

58. What is the different between the number of students passed with 30 as cut-off marks in Chemistry and those passed with 30 as cut-off marks in aggregate?

- A. 3
- B. 4
- C. 5
- D. 6

59. If at least 60% marks in Physics are required for pursuing higher studies in Physics, how many students will be eligible to pursue higher studies in Physics?

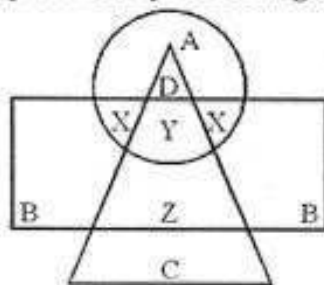
- A. 27
- B. 32
- C. 34
- D. 41

60. The number of students scoring less than 40% marks in aggregate is?
- 13
 - 19
 - 20
 - 27

General Intelligence

61. In a certain code LAWN is written as JCUP. How will SLIT be coded in that code?
- QNGV
 - QJGV
 - QNVG
 - NJGV
62. Look at this series: 7, 10, 8, 11, 9, 12, ... What number should come next?
- 7
 - 10
 - 12
 - 13
63. Insect: Disease :: War : ?
- Army
 - Defeat
 - Destruction
 - Arsenal

Directions (Q. No. 64-68) : In the following diagram, the circle represents College Professors, the triangle stands for Surgical Specialists, and Medical Specialists are represented by the rectangle.



64. College Professors who are also Surgical Specialists are represented by
- A
 - B
 - C
 - D
65. Surgical Specialists who are also Medical Specialists but not Professors are represented by
- B
 - X
 - Y
 - Z

66. C represents

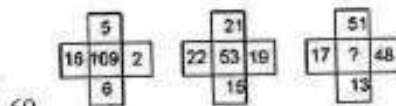
- A. Medical Specialists
- B. College Professors
- C. Surgical Specialists
- D. Medical and Surgical Specialists

67. B represents

- A. Professors who are neither Medical nor Surgical Specialists
- B. Professors who are not Surgical Specialists
- C. Medical Specialists who are neither Professors nor Surgical Specialists
- D. Professors who are not Medical Specialists

68. College Professors who are also Medical Specialists are represented by

- A. A
- B. X
- C. Y
- D. Z



- A. 7
- B. 25
- C. 49
- D. 129

70. What will be the difference between the sum of the odd digits and the sum of the even digits in the number 857423?

- A. 0
- B. 1
- C. 2
- D. None of these

Directions (Q. No. 71-75): Study the given information carefully and answer the questions that follow :

- (i) A, B, C, D, E, F and G are sitting on a wall and all of them are facing east.
- (ii) C is on the immediate right of D.
- (iii) B is at an extreme end and has E as his neighbour.
- (iv) G is between E and F.
- (v) D is sitting third from the south end.

71. Who is sitting to the right of E?

- A. A
- B. C
- C. D
- D. F

72. Which of the following pairs of people are sitting at the extreme ends?
- CA
 - AE
 - CD
 - FB
73. Name the person who should change place with C such that he gets the third place from the north end.
- E
 - F
 - G
 - D
74. Immediately between which of the following pairs of people is D sitting?
- AC
 - AF
 - CE
 - CF
75. Which of the conditions (i) to (v) given above is not required to find out the place in which A is sitting?
- (i)
 - (ii)
 - (iii)
 - All are required
76. If + means \div , - means \times , \div means + and \times means \div , then $15 - 3 + 10 \times 5 \div 5 = ?$
- 5
 - 22
 - 48
 - 52
77. If ' \div ' stands for 'division', ' \times ' for 'multiplication', ' $-$ ' for 'subtraction' and ' $+$ ' for 'addition'. Which one of the following equation,s is correct?
- $6 + 20 - 12 \div 7 - 1 = 38$
 - $6 - 20 + 12 \div 7 + 1 = 57$
 - $6 + 20 - 12 \div 7 \times 1 = 62$
 - $6 \div 20 \times 12 + 7 - 1 = 70$
78. Sequence of occurrence of events or various stages in a process:
- | | | | | | |
|--|----------|--------|----------------|---------|----------|
| | 1. Study | 2. Job | 3. Examination | 4. Earn | 5. Apply |
|--|----------|--------|----------------|---------|----------|
- 1, 3, 2, 5, 4
 - 1, 2, 3, 4, 5
 - 1, 3, 5, 2, 4
 - 1, 3, 5, 4, 2

79. From the given alternative words, select the word which cannot be formed using the letters of given word: Given: IMPASSIONABLE
- A. IMPASSABLE
 - B. IMPOSSIBLE
 - C. IMPASSIVE
 - D. IMPASSION

80. Select the one which is different from the other three responses.
- A. Shimla
 - B. Darjeeling
 - C. Ooty
 - D. Agra

Basic Civil Engineering

81. What is the Hardness Number of "Topaz" Rock?
- A. 1
 - B. 6
 - C. 8
 - D. 10

82. Before testing setting time of cement one should test cement for
- A. Soundness
 - B. Strength
 - C. Fineness
 - D. Consistency

83. Which mould is use to find the ductility of bitumen?
- A. Briquette Mould
 - B. Ring and Ball Mould
 - C. Renkines Mould
 - D. None of these

84. The metal oxide used to make emerald green glass is
- A. MnO_2
 - B. Cr_2O_7
 - C. Cobalt oxide
 - D. Iron oxide

85. Soils are derived from
- A. Igneous Rock
 - B. Metamorphic Rock
 - C. Sedimentary Rock
 - D. Any of these

86. Which of the following is not a varnish
- A. Spar varnish
 - B. Flat varnish
 - C. Asphalt varnish
 - D. Methyl varnish

87. Fog of Brick is Normally Made on ...?

- A. Longer Face
- B. Shorter Face
- C. Top Face
- D. Bottom Face

88. Ring and ball apparatus is use for which of the following test of bitumen?

- A. Penetration
- B. Viscosity
- C. Softening point
- D. Ductility

89. Which is not the defect in the timber

- A. Heart shake
- B. Cup shake
- C. Knot
- D. Tada

90. The loss of stress with time at constant strain is called.....

- A. Relaxation
- B. Creep
- C. Shrinkage
- D. Ductility

91. Which is not related to soil limits?

- A. Liquid limit
- B. Plastic limit
- C. Atterberg limit
- D. Shear limit

92. Form following rock examples which is not a stratified rock

- A. Limestone
- B. Shale
- C. Marble
- D. Trap

93. Which is not the Grade of cement?

- A. 33
- B. 53
- C. 23
- D. 43

94. The rapid hardening Portland cement has a

- A. Lower heat of hydration
- B. Medium heat of hydration
- C. Lower shrinkage coefficient
- D. Higher shrinkage coefficient

95. The ability of aggregate to resist changes volume as a result change in physical condition is called as?
- A. Soundness
 - B. Volume index
 - C. Fineness index
 - D. None of these
96. The liquid limit exists in
- A. Sandy soil
 - B. Gravel soil
 - C. Silty soil
 - D. Clay
97. Decay of wood is caused in acid medium if P_{H} is
- A. < 2
 - B. < 3
 - C. < 4
 - D. < 6
98. The most use less aggregate is, whose surface texture is
- A. Smooth
 - B. Glossy
 - C. Granular
 - D. Porous
99. The Compacting factor test of cement concrete determines its...
- A. Strength
 - B. Porosity
 - C. Workability
 - D. None of these
100. Water absorption for 1st class brick should not be more than
- A. 12 %
 - B. 15 %
 - C. 20 %
 - D. 28 %

Lab Technician : Civil - Question Paper Set III

Answer Key

1	A	2	C	3	A	4	B	5	A
6	D	7	A	8	A	9	D	10	D
11	D	12	C	13	C	14	C	15	C
16	C	17	D	18	D	19	C	20	A
21	C	22	B	23	B	24	A	25	B
26	B	27	D	28	A	29	B	30	C
31	B	32	C	33	B	34	D	35	C
36	A	37	B	38	C	39	B	40	C
41	D	42	B	43	A	44	A	45	B
46	C	47	B	48	B	49	A	50	D
51	C	52	C	53	B	54	C	55	A
56	C	57	B	58	D	59	B	60	D
61	A	62	B	63	C	64	D	65	D
66	C	67	C	68	B	69	B	70	B
71	D	72	A	73	C	74	D	75	D
76	C	77	D	78	C	79	C	80	D
81	C	82	D	83	A	84	B	85	D
86	D	87	C	88	C	89	D	90	A
91	D	92	D	93	C	94	D	95	A
96	D	97	C	98	B	99	C	100	B

Government Polytechnic, Diglipur

A & N Administration

Written test for the post of Lab. Technician (Civil & CSE)

Date of Exam:

Format for Claims & Objections

S.No.	Name of the Post	Name of the Candidate	Roll No.	Question No.	Option	Justification
1						
2						
3						
4						
5						

The filled format to be sent through mail to gpdiglipur@gmail.com